



TECH-MAN

Lnnovative Machine Maker



Rubber hot pressing and
comprehensive hot pressing system manufacturer.

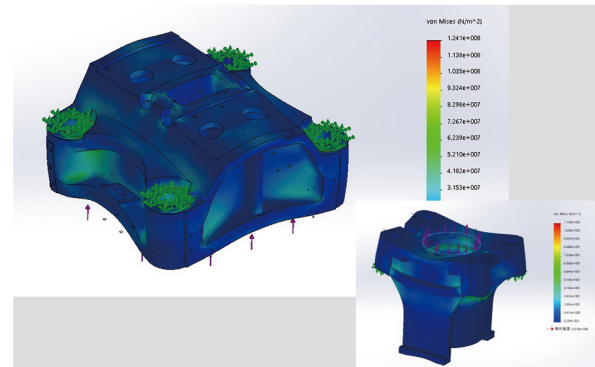
橡膠熱壓成型&全方位熱壓成型系統製造商

Stronger structural design

更強力的結構設計

Reduce the structural deformation during high output operation by conducting stress analysis on the pressure-loaded structure.

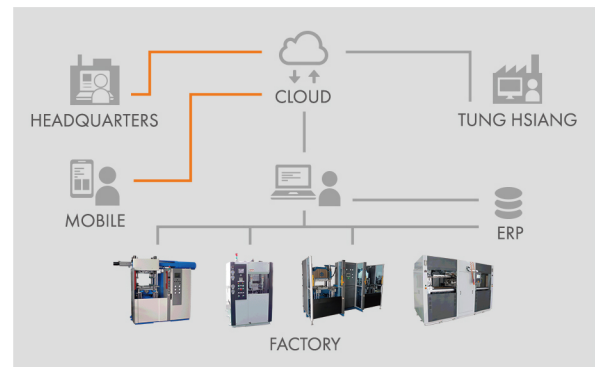
受壓結構經應力分析，降低大出力輸出時的結構變形量。



Smarter intelligent manufacturing

更智慧的智能生產

1. Return equipment maintenance information to management.
 2. Collect and manage production equipment messages and process technology.
1. 回傳設備生管訊息。
2. 生產設備訊息及製程工藝收集管理。

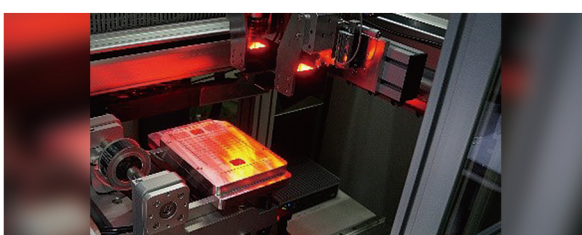


Higher energy efficiency

更高的能源利用率

The hydraulic-electric servo provides precise control of pressure and flow for each movement, eliminating energy waste when there is no action.

油電伺服精確控制每個動作的壓力流量，消除無動作時的虛耗能源。

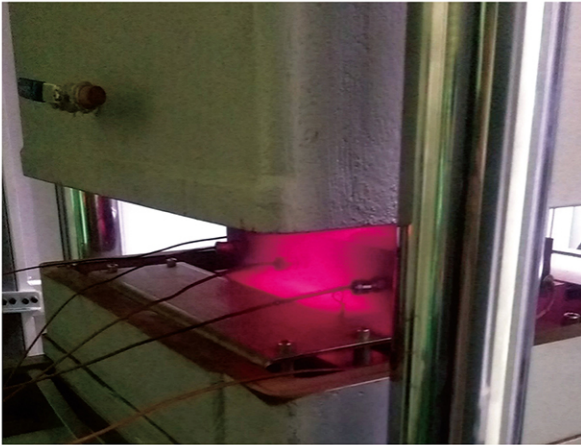


More precise molding positioning

更精準的成型定位

CCD visual alignment and inspection assistance.

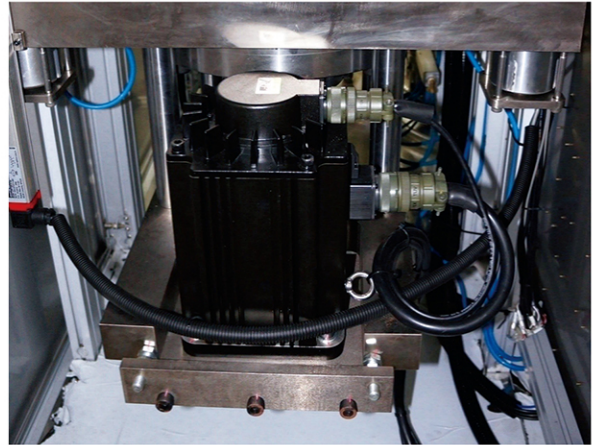
CCD視覺對位及檢測輔助。



Higher-energy molding processes 更高能量的成型工藝

High-temperature hot pressing technology above 500 degrees and anti-oxidation technology for high-temperature molds are applicable to special metal forming and powder sintering processes.

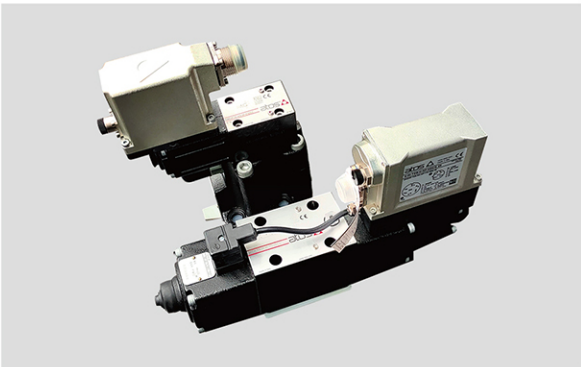
超過500度高溫熱壓工藝及高溫模具抗氧化技術適用特殊金屬成型及粉末燒結製程。



Cleaner production environment 更潔淨的生產環境

Full electric or hybrid electric and pneumatic hot-pressing molding technology used in a dust-free environment.

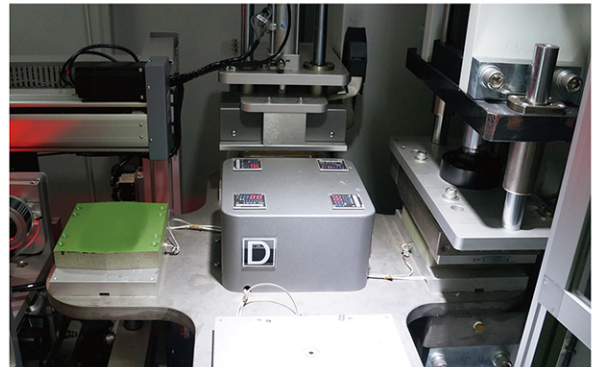
在無塵環境使用的全電或氣電複合熱壓成型技術。



More precise molding control 更精準的成型控制

Closed-loop servo valve can be selected for high-precision pressure control of 0.1 KG/CM² and high-precision position control of 0.05mm.

閉迴路伺服閥，高精度壓力控制0.1KG/CM²，高精度位置控制0.05mm。



More efficient production methods 更高效的生產方式

Customized hot-press molding automation tailored to your requirements to make the production process faster and more efficient.

根據你的要求量身訂製熱壓成型自動化，使生產過程更快、更高效。



Technical field

技術領域

Tung hsiang has extensive experience in equipment fabrication in the fields of rubber, powder, metal, composite materials, high-temperature and high-pressure forming, process automation, image-assisted alignment, and other related areas.

桐祥在橡膠、粉末、金屬、複合材、超高溫、超高氣體壓力成型，製程自動化，影像輔助對位等領域，有豐富的設備製作經驗。

Exquisite craftsmanship

精湛工藝

Our exquisite manufacturing craftsmanship ensures the quality and precision of our products.

精湛的加工工藝，能夠確保產品的品質和精度。



Design and development

設計開發

We design and provide equipment according to customer ideas and market demands.

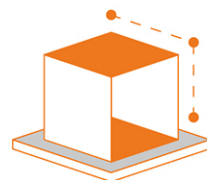
我們依客戶想法及市場需求，設計提供客戶所需設備。

Hot-press molding

熱壓成型

We specialize in hot pressing technology and provide the best solutions to meet your needs.

專注熱壓成型技術，提供最佳解決方案。



After-sales service

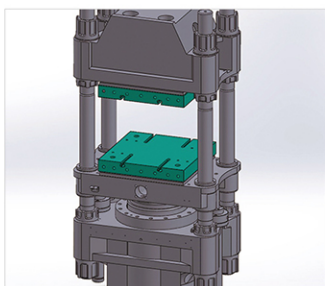
售後服務

We provide comprehensive after-sales service to address any customer issues through both physical and online channels.

我們提供完善的售後服務，實體及線上排除時解決客戶問題。

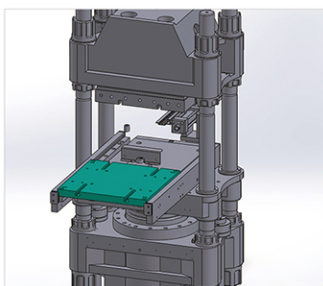
Mold opening system

開模系統



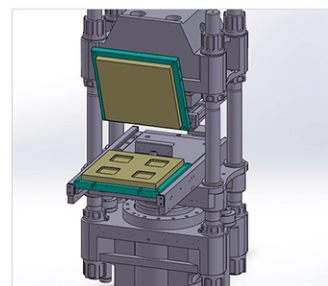
1. Die-clamping mechanism.

1. 主缸上下機構



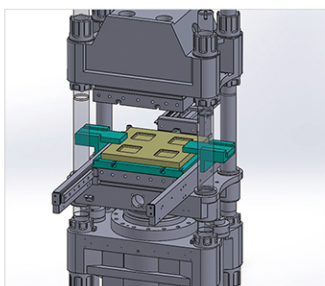
2. Template entering and exiting mechanism.

2. 模板出入機構



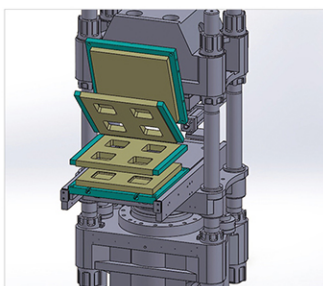
3. Arm lifting mold mechanism.

3. 手臂掀模機構



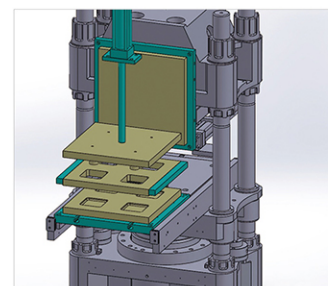
4. Lower mold fixed pin mechanism.

4. 下模固定插銷機構



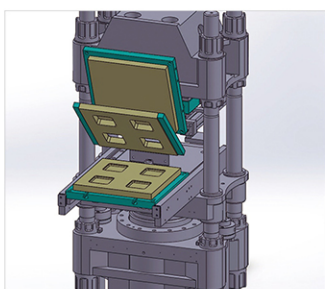
5. 4RT Double-layer mold turning mechanism.

5. 4RT雙層具模翻轉機構



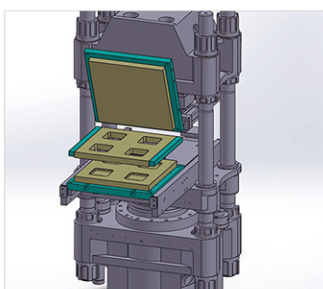
6. 3RT+ downward ejector mold mechanism.

6. 3RT+下拍板機構



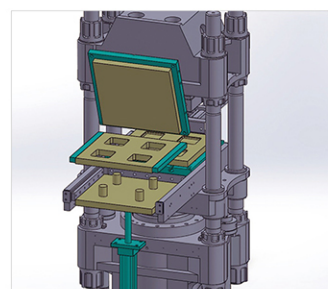
7. 3RT Double layer mold flipping mechanism.

7. 3RT雙模翻轉機構



8. 3RT Single layer flip mechanism.

8. 3RT單層翻板機構



9. 3RT+upward ejector mold mechanism.

9. 3RT+上拍板機構



Safety and reliability 安全可靠

Equipped with peripheral safety guards and protective light curtains to ensure the safety of personnel.

配備外圍檔板及保護光閘，保護人員安全。

Smart manufacturing 智慧生產

Can be remotely monitored via mobile phone connection and provide maintenance cycle reminders.

可手機遠端連線監視，保養周期提示。



Precision manufacturing 精準生產

Japanese high-performance controllers combined with hydraulic pressure flow rate proportional valves can flexibly and accurately control pressure, speed, and temperature to improve product quality.

日製高性能控制器搭配油壓壓力流量比例閥，可靈活精確控制壓力速度和溫度，提高製品質量。



Application areas 應用領域

Shock absorber pads, seals, O-rings, automotive components, sports equipment, buttons, silicone parts, medical equipment.

避震墊、密封件、O型環、汽車零組件、運動器材用品、按鍵、矽膠零件、醫療器材。

Model 型號		HR-100	HR-150	HR-200	HR-250	HR-300	HR-500	HR-800
Clamping Unit 鎖模單元								
Clamping Force (Ton) 鎖模力		100	150	200	250	300	500	800
Plate Size (mm) 模面尺寸		350X400	460X460	510X510	570X610	650X650	850X850	1000X1000
Piston Diameter (mm) 活塞直徑		250	300	355	400	450	560	700
Piston Stroke (mm) 活塞行程		300	300	300	300	300	250	250
Power 動力單元								
Hydraulic System (hp) 油壓系統		15	15	10X2	10X2	15X2	15X2	20X2
Heating Capacity (kW) 模板加熱		4.8X4	6.5X4	7.5X4	7.8X4	10X4	16.5X4	24X4
System Pressure (kg/cm ²) 系統壓力		210	210	210	210	210	210	210
Oil Tank Capacity (L) 油箱容量		350	350	500	500	750	750	800

Standard specifications are provided for customer reference and can be adjusted according to customer requirements.
標準規格供客戶參考，可依客戶需求設變。

Vacuum rubber hot press molding machine 抽真空橡膠熱壓成型機

VR -Series



ELMO RIETSCHLE Vacuum Pump 抽真空泵

High-flow vacuum system, quickly establishing high vacuum conditions in the cavity.

大流量真空系統，迅速建立腔體高真空狀態。



Application areas 應用領域

Suitable for those who require more stringent molding conditions and higher quality rubber.

適合需要較嚴苛成型條件及較高品質的橡、矽膠產品。

Model 型號		VR-100	VR-150	VR-200	VR-250	VR-300	VR-500	VR-800
Clamping Unit 鎖模單元								
Clamping Force (Ton)	鎖模力	100	150	200	250	300	500	800
Plate Size (mm)	模面尺寸	350X400-UP 350X450-DO	460X440-UP 460X460-DO	510X460-UP 510X510-DO	570X560-UP 570X610-DO	650X610-UP 650X650-DO	850X800-UP 850X850-DO	1100X1050-UP 1100X1100-DO
Piston Diameter (mm)	活塞直徑	250	300	355	400	450	560	700
Piston Stroke (mm)	活塞行程	300	300	300	300	300	250	250
Power 動力單元								
Hydraulic System (hp)	油壓系統	15	15	10X2	10X2	15X2	15X2	20X2
Heating Capacity (kW)	模板加熱	4.8X4	6.5X4	7.5X4	7.8X4	10X4	16.5X4	24X4
Vacuum System (hp)	真空系統	3	3	5	5	7.5	5X2	5X2
System Pressure (kg/cm ²)	系統壓力	210	210	210	210	210	210	210
Oil Tank Capacity (L)	油箱容量	350	350	500	500	750	750	800

Standard specifications are provided for customer reference and can be adjusted according to customer requirements.
標準規格供客戶參考，可依客戶需求設變。

Diverse design solutions 多樣化的設計方案

Options for FIFO injection, vertical and horizontal injection, as well as cold runner system units.

可選擇FIFO射出、立式、臥式射出，及冷膠道系統單元。

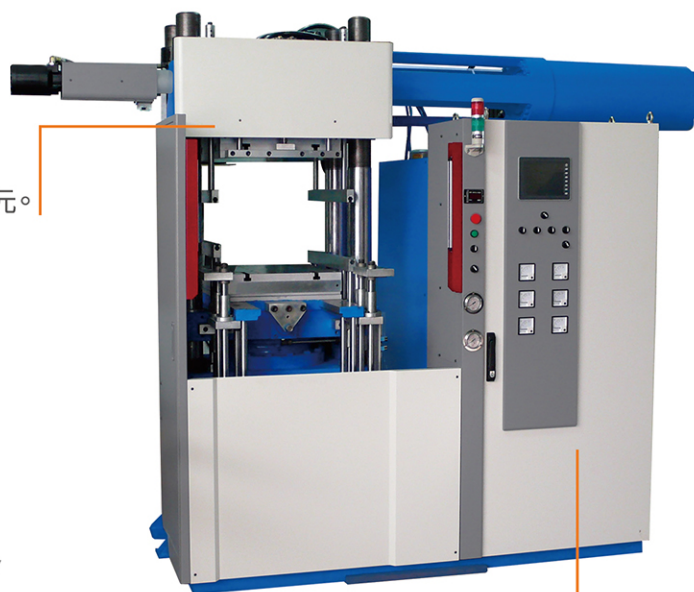


Energy-saving hydraulic servo system

節能油壓伺服系統

Precise control of mechanical actions, reducing energy consumption and increasing product stability.

機械動作精準控制，降低能源消耗，提高產品穩定度。



Application areas 應用領域

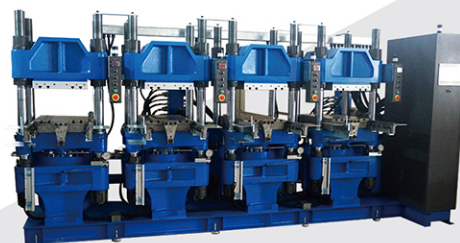
Suitable for rubber and silicone products that require longer molding time and have larger volume, such as rollers, shock-absorbing rubber, shoe soles, and diving mask frames.

適合需要較長成型時間及體積較大的橡、矽膠產品，例如滾輪、減震橡膠、鞋底、潛水鏡框。

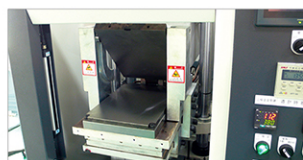
Model 型號		JR-100	JR-200	JR-250	JR-350	JR-500
Clamping Unit 鎖模單元						
Clamping Force (Ton)	鎖模力	100	200	250	300	500
Plate Size (mm)	模面尺寸	400X400	510X510	570X610	650X650	850X800
Piston Diameter (mm)	活塞直徑	250	355	400	450	560
Piston Stroke (mm)	活塞行程	350	400	450	450	450
Power 動力單元						
Hydraulic System (hp)	油壓系統	15	20	20	25	25
Heating Capacity (kW)	電熱容量	4.8X2	7.5X2	7.8X2	10X2	16.5X2
System Pressure (kg/cm ²)	系統壓力	210-250	210-250	210-250	210-250	210-250
Oil Tank Capacity (L)	油箱容量	350	350	500	500	750
Injection Unit 射出單元						
Injection Volume (cm ³)	射膠量	500/1000	1000/1500	2000/2500	2500/3000	3000/4000
Injection Pressure (Kgf/cm ²)	射膠壓力	1600-2500	1600-2500	1600-2500	1600-2500	1600-2500
Screw Diameter (mm)	螺桿直徑	35	40	40	40	50
Plunger Diameter (mm)	柱塞直徑	65	80	80	80	100

Standard specifications are provided for customer reference and can be adjusted according to customer requirements.
標準規格供客戶參考，可依客戶需求設變。

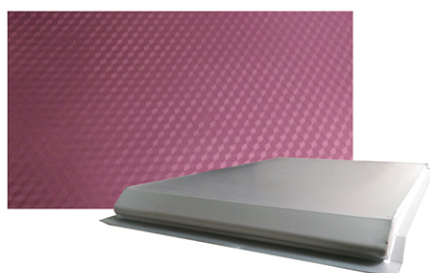
Multi-station thermal forming equipment 多站式熱成型設備



High-temperature powder forming equipment (with vacuum and atmosphere protection functions) 高溫粉末成型設備(抽真空及氣氛保護功能)



Ultra-high temperature thermoforming and hot press equipment (up to 600 degrees) 超高溫金屬成型熱壓設備(600度)



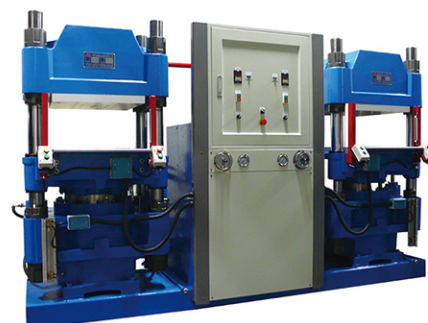
Rapid cold and hot forming of carbon fiber or polymer materials and diamond grinding wheels

碳纖或高分子材料、鑽石砂輪急冷急熱成型。



Large-scale composite high-temperature and high-pressure molding equipment

大型複合材料高溫高壓成型設備



Small-scale thermoforming equipment for laboratory use

實驗室用小型熱成型設備



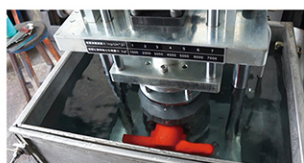
Small-scale thin film punching machine

小型薄膜沖床



Underwater gate valve leak testing machine

閥門沉水式壓機



Butterfly valve gasket assembly machine

蝶閥膠圈組裝機

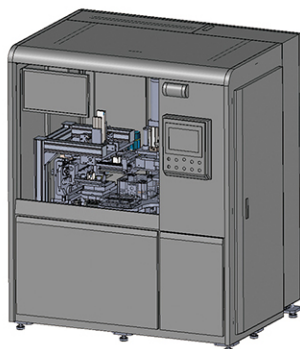
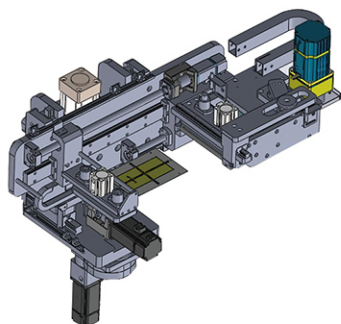
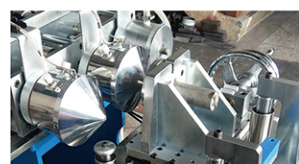


Manual hot press series

手動熱壓系列

In the era of automated production processes, certain industries still rely on irreplaceable manual hot forming techniques, where the warmth and touch of a craftsman's hands set a standard that machines cannot replicate.

在自動化製作工藝的時代，某些產業的仍保有無可取代的手工熱成型技術，工匠手感的溫度是機械無法達到的標準。



Design and manufacturing of automated thermoforming systems

自動化成型系統設計製造

Innovative Machine Maker

桐祥機械企業有限公司

Tung Hsiang Machinery Enterprise Co., Ltd.

23874新北市樹林區東豐街49巷39號

No. 39, Lane 49, Dongfong St., Shulin Dist., New Taipei City, Taiwan

T +886-2-8685-4227

F +886-2-86856028

E tunghsiang@gmail.com

www.tunhs.com



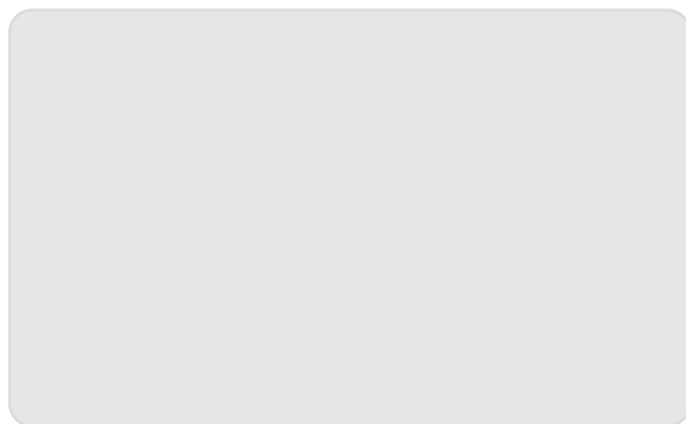
Website



Vcard



LINE



Recruiting agents 代理商招募中